

*Welcome to Our Savior Lutheran!*



We are glad you're here.  
Please sign the Friendship Register  
and pass it to your neighbor.  
First time at OSLC? Fill out a  
green guest card.

**Thank you for turning off your  
cell phones.**

1

A background image showing several hands reaching towards a bright, glowing light source, possibly the sun, creating a warm, golden atmosphere. The hands are in various positions, some reaching up, some reaching down, symbolizing unity and worship.

*Worship with us*  
**Sunday's at 9:30am**  
**And 11:00am**

2

***Personal Listening  
Earphones  
are available at the  
sound desk.***

***A wheelchair & walker are  
also available.***

3

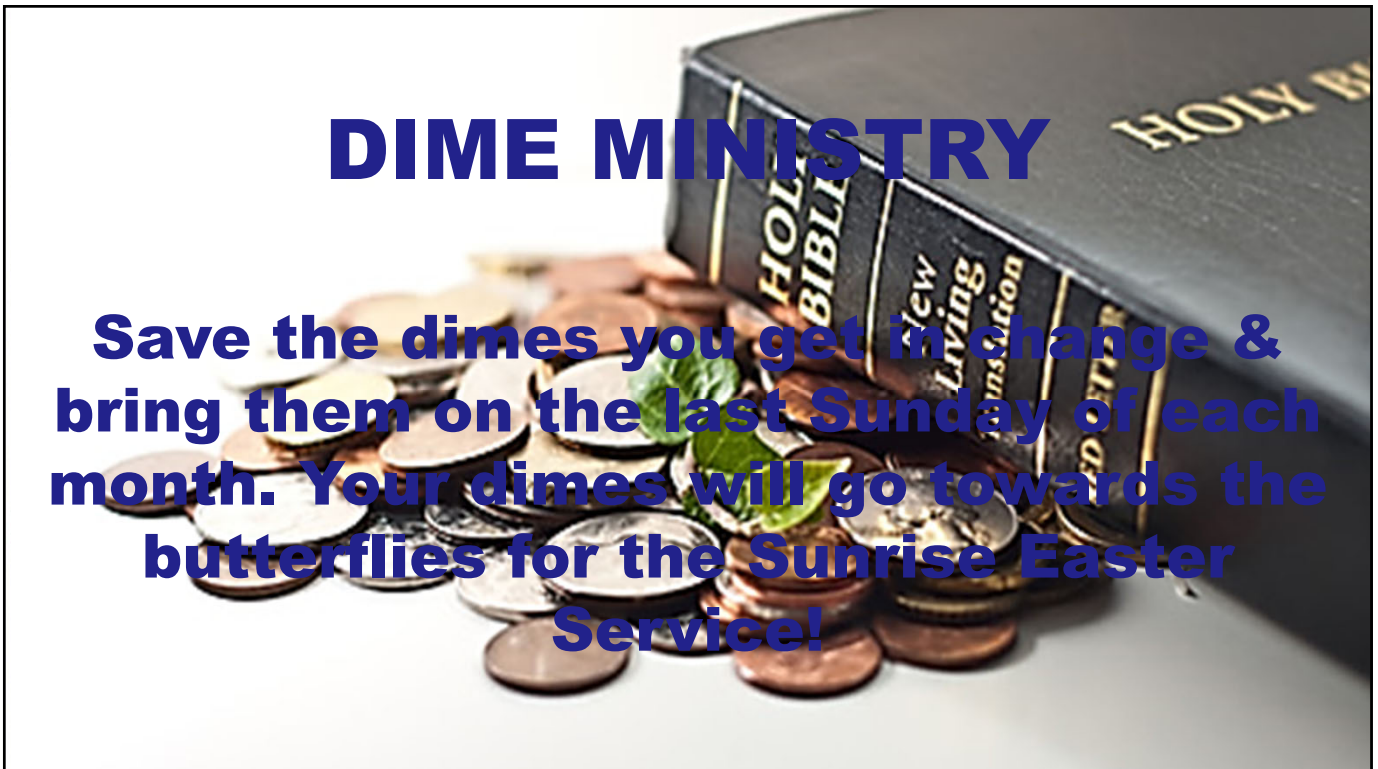


**Sharing & Caring  
NEEDS SOUP,  
CANNED MEAT,  
CANNED BEANS  
& COOKING OIL**

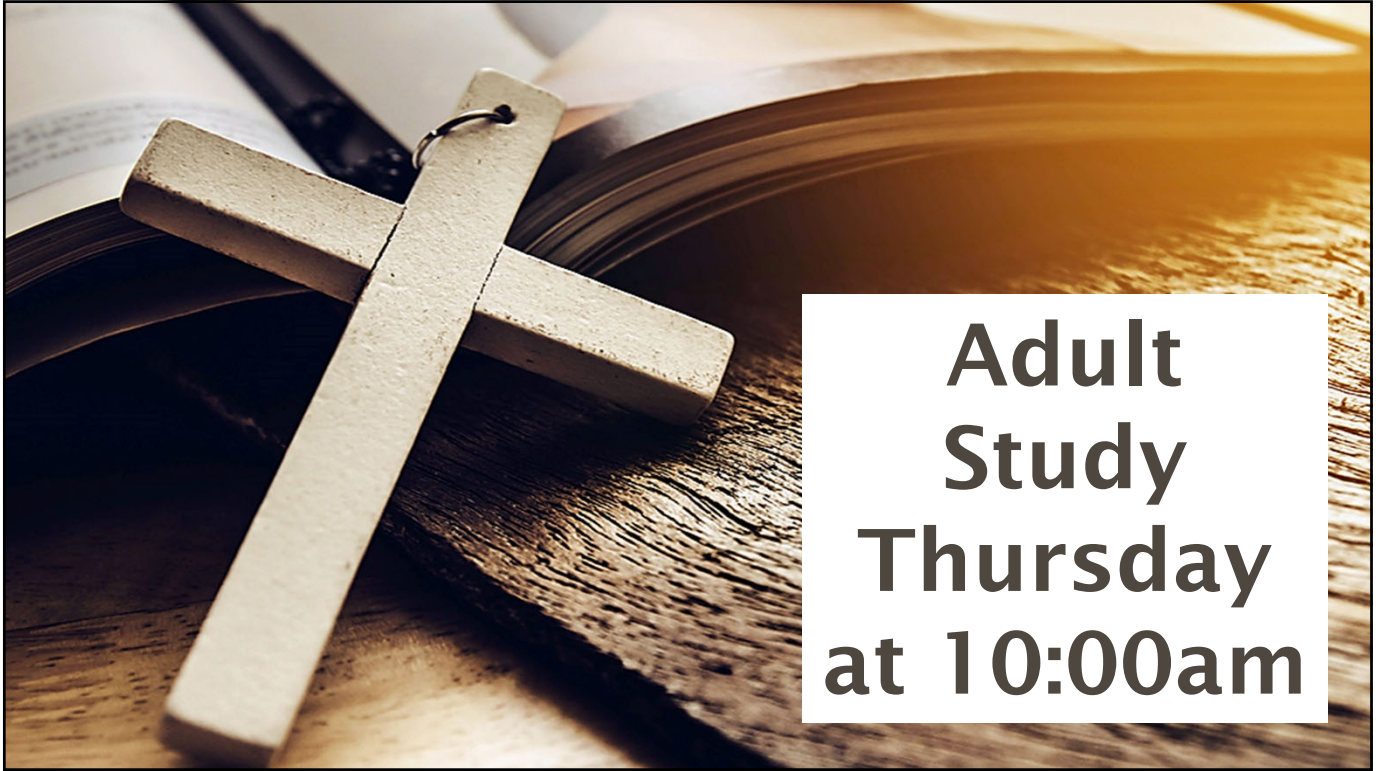
4



5



6



**Adult  
Study  
Thursday  
at 10:00am**

7



# Scrip News

**I will be taking Scrip Orders today  
and delivering March 27<sup>th</sup> or before.  
See Vicki Drews to place your order.**

*OSLC receives a percentage of every card purchased. Thanks!*

8



Sign up in the  
Narthex to order  
altar flowers.  
Altar Flowers  
Given Today by  
Wanda Nebiolo in  
loving memory of  
her brother  
Lewis.

9

## SUNDAY SCHOOL CLASSES

Join Us For



Sunday School  
classes in the LFC  
for children &  
adults at 9:45am.

14

# UPDATED OSLC WEBSITE



To go directly to Newsletter type in  
[oursaviormcallen.org/newsletter.html](https://oursaviormcallen.org/newsletter.html).

**Please Check out our updated OSLC Website! You can once again view the current and past month's newsletters as well as a wealth of useful information!**

16



**Join us for fellowship after the service. Donations of Baked Goods gratefully accepted.**

17

# VOLUNTEERS NEEDED

Volunteers needed for Making Quilts for Charity. Meeting Tuesday Mornings from 9-12 in the sewing room.

Please contact Judy Juncker with questions.



18

# Church Office Needs Your Help!

Please update your contact information by filling out the form in the Narthex and dropping it in the offering plate, by calling the office, or by email.



23

## Confirmation Class



**Confirmation Class  
Tuesday, March  
22<sup>nd</sup> at 6:30pm.**

25

## PRAISE TEAM PRACTICE



**Join us for Praise  
team practice, March  
23rd at 7:15pm.**

**See you there!**

26



# SUNDAY SCHEDULE

9:30am Traditional  
Service

9:45am Children's and  
Adults Sunday School

10:30-11:00am  
Fellowship

11:00am Contemporary  
Service



29

# JOIN US TO PLAY BELLS!

Bell practice on  
Monday, March  
21st at 6:30pm.

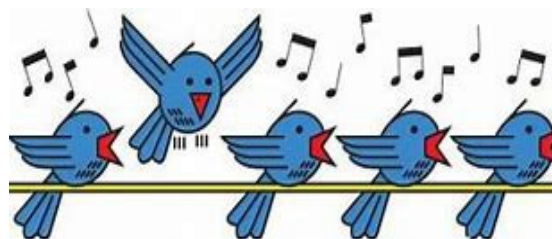


31

## CHOIR PRACTICE 3/23 AT 6:15 PM



**Join the choir...**  
**You'll Be Glad**  
**You Did!**

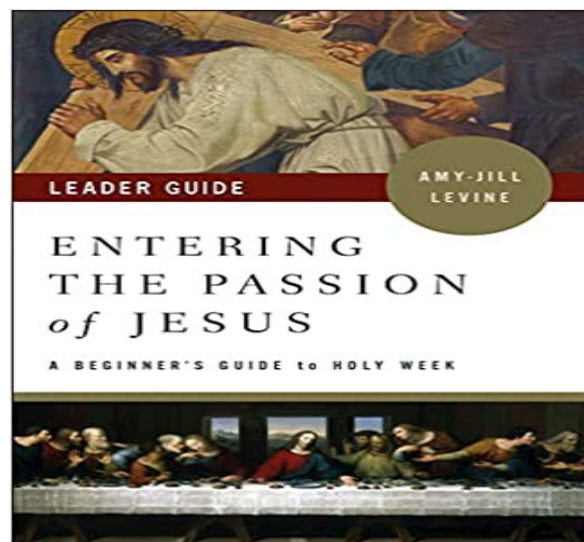


**CHOIR**  
**Rehearsal**

34

## NEW BIBLE STUDY- MARCH 3RD

New Study, March 3<sup>rd</sup> called Entering the Passion of Jesus. 6 week study with DVD facilitated by Pastor Jim Wilken.



45

# LENTEN SEASON

Lenten Season began Ash Wednesday. Each Wednesday after that, we have a light dinner at 4:30pm followed by services at 5:30pm.

The service's theme will be Turning Toward God's Abundance. Thank you to those who signed up to prepare the meals.