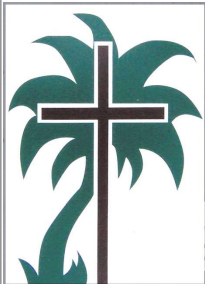


Welcome to Our Savior Lutheran!



We are glad you're here.
Please sign the Friendship Register
and pass it to your neighbor.
First time at OSLC? Fill out a
green guest card.

**Thank you for turning off your
cell phones.**

1

Worship with us
Sunday's at 9:30am
And
at 11:00am Contemporary

2

***Personal Listening
Earphones
are available at the
sound desk.***

***A wheelchair & walker are
also available.***

3



**Sharing & Caring
NEEDS CEREAL,
CANNED MEAT,
CANNED BEANS
& CANNED
FRUIT**

4



Lectors
Ushers
Communion
Assistants
Worship
Assistants
Volunteer!

5



DIME MINISTRY

Save the dimes you get in change & bring them on the last Sunday of each month. Your dimes will go to the Sharing & Caring group.

6

Scrip News

I will be taking Scrip Orders
December 4th & 11th and delivering
on the 11th & the 18th or before. See
Vicki Drews to place your order.

OSLC receives a percentage of every card purchased. Thanks!

8



Altar Flowers

Sign up in the
Narthex to order
altar flowers.
Flowers given
this week in
honor of Sally
Askins & Joann
Goede's
Birthday!

9

COUNCIL MEETING 12/13/22



There will be a
Council Meeting
at 6:30pm
12/13/22.

11

SUNDAY SCHOOL CLASSES

Join Us For



Sunday school
classes for youth
and adults at
9:45am in the LFC
today.

14

LOST GROUP

LOST Group and youth go Caroling after 2nd service today. Come join them. See Dawn for details!



15

UPDATED OSLC WEBSITE



To go directly to Newsletter type in oursaviormcallen.org/newsletter.html.

Please Check out our updated OSLC Website! You can once again view the current and past month's newsletters as well as a wealth of useful information!

16



Join us for
fellowship after the
9:30am service.
Donations of
Baked Goods
gratefully
accepted.

17

VOLUNTEERS NEEDED

Volunteers needed for
Making Quilts for
Charity. Meeting
Tuesday Mornings from
9-12 in the sewing room.

Please contact Judy
Juncker with questions.



18

OUR DAILY BREAD



Pick up your
December/January/
February copy of
Our Daily Bread on
the reception tables
in the Narthex.

20

Church Office Needs Your Help!

Please update your
contact information by
filling out the form in
the Narthex and
dropping it in the
offering plate, by calling
the office, or by email.



23

Confirmation Class



No Confirmation Class Tuesday, December 13th at 6:30pm. Resumes December 20th at 6:30pm.

25

PRAISE TEAM PRACTICE



Join us for Next Praise team practice, December 14th at 7:15pm. See you there!

26

SUNDAY SCHEDULE

9:30am Traditional
Service

9:45am Children's and
Adults Sunday School

10:30-11:00am
Fellowship.

11:00am Contemporary
Service



29

NEW MEMBER INSTALLATION



New Member
Installation

Sunday, December
18th.

Interested in becoming a new
member see Pastor Steve.

30

JOIN US TO PLAY BELLS!

Come join us for Bell practice Sunday, December 18th at noon.

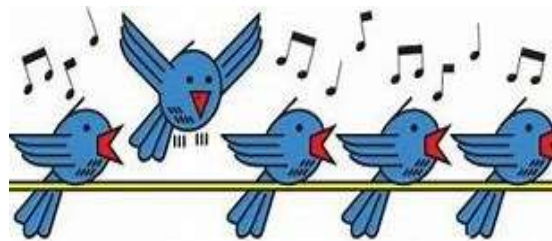


31

CHOIR PRACTICE 12/14 AT 6:15 PM



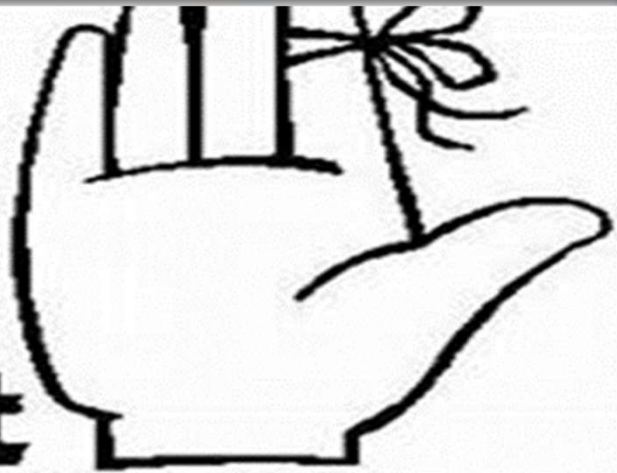
Join the choir...
You'll Be Glad You Did!



CHOIR
Rehearsal

40

**Don't
Forget
your
Pledge!**



46

Christmas Eve Services



**Join us for Christmas
Eve Candlelight and
Communion Services
at 3pm & 6pm on
December 24th.
Service at 9:30am
Christmas Day.**

47

Spanish Service & Pantry

Join us Saturday,
December 17th at 8:15
for the Spanish Service
and at 9am to help with
the Food Pantry.



61

CHRISTMAS POINSETTIAS



Order Your Christmas
Poinsettia – Use order
form from newsletter or
take an extra form from
Narthex. Place check for
\$10.00 and form in
Offering plate.

71

RGV Concert Band Christmas Concert

Come join the RGV Concert Band today at 3pm in the OSLC gymnasium in the LFC!



72

First Communion 12/4



73

First Communion



74

Lighting of Advent Wreath



75

Baptism



76

Baptism



77