

Servant Event Opportunities

Various organizations utilize volunteers to accomplish goals on the border between South Texas and Mexico. Our Savior Lutheran Church has supported this ministry since 1996.

Groups are encouraged to contact organizations for servant opportunities on both sides of the border. Mission activities include helping in area colonias (neighborhoods of substandard housing), working with children's orphanages, Habitat for Humanity, the RGV food bank, remodeling projects, and others.



Border Area Missions

Our Savior Lutheran Church

*God is seen, Love is felt,
Lives are changed.*



Our Savior Lutheran Church provides reasonably priced accommodations at the Living Faith Center. We welcome groups to attend our worship services. Go to our website for registration forms and information.



Contact: Sue Wadgyamar

Phone: 956-631-6121

Email: oslcelca@aol.com

Website: www.oursaviormcallen.org



The Living Faith Center

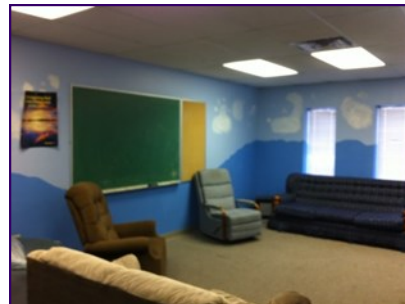


Housing

The Living Faith center has a fully equipped kitchen with pots, pans, dishes, cooking appliances, and refrigerator. There is a large grocery store about 2 blocks away, and many restaurants and fast food places are within easy walking distance.

The downstairs bathrooms for males and females have 2 showers in each, and are handicapped equipped. A washing machine and dryer are provided.

Groups must clean up after themselves,. Groups are responsible for setting the alarm system and will be provided with keys and instructions. Please limit the valuables to be brought, remembering that they should not be left at the LFC. Our Savior is not responsible for theft or loss.



The Faith Center has about 50 cots with mattresses. Groups should bring bedding. The second story classrooms can be used as sleeping areas and an elevator is available. The gym has some sports equipment and there is a downstairs lounge area.

The LFC has its own telephone number that is only answered at the center itself, (956) 631-3787. The church office does not answer this number. Only local or 1-800 calls can be made.

Our Savior Lutheran Church is located about 15 miles north of the Texas/Mexico border. South Padre Island beach and resort area is only an hour and a half away.

